

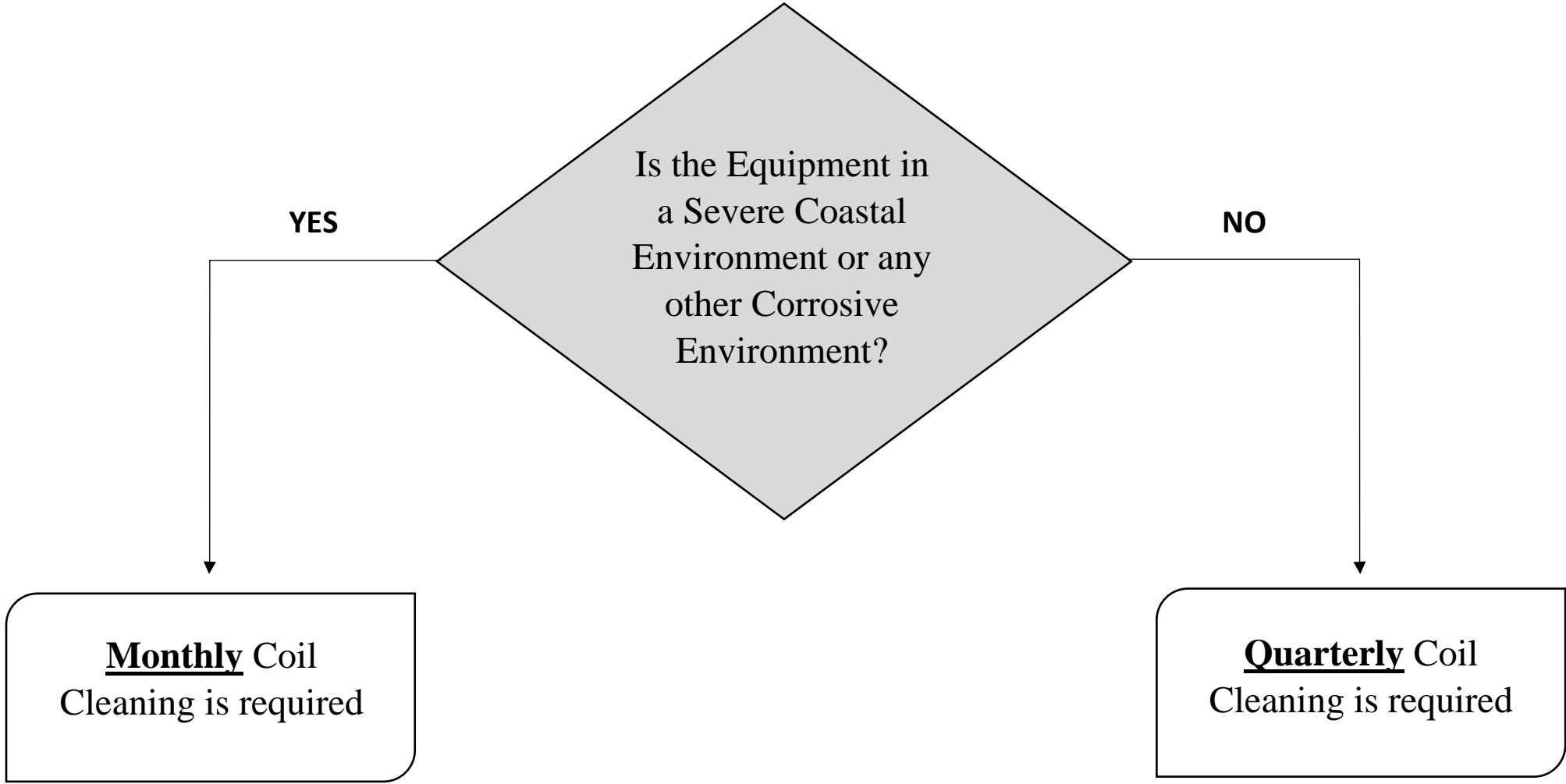
# COIL CLEANING LOG

Cleaning Cycle (Circle One):    Monthly    Quarterly

Name	Date	Name of Cleaning Product(s) Used	Completion Signature

**ANY SIGN(S) OF CORROSION MUST BE REPORTED TO WILSENERGY IMMEDIATELY**

# COIL CLEANING FREQUENCY GUIDE



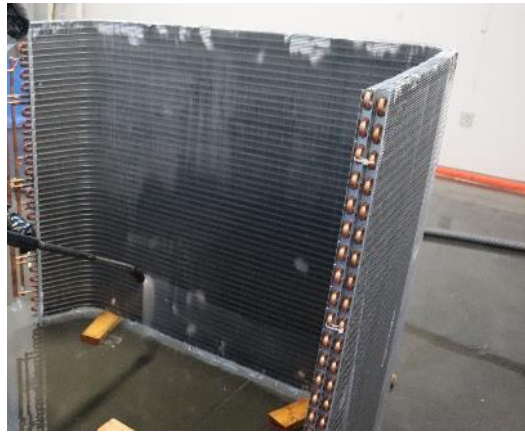
**Severe Coastal Environment** – Equipment is 3/4 of a mile off the coast, or less

**Corrosive Environment** – An environment in which the coil is exposed to conditions that are potentially harmful, corrosive, acidic, or abnormal

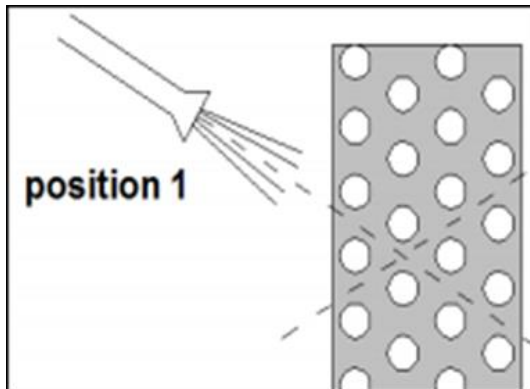
# COIL CLEANING INSTRUCTIONS



1. Spray the coil with water and a non-acidic detergent (ex: dish soap) in a side-to-side motion starting at the top



2. Continue with the side-to-side motion as you work your way down the coil



(Proper Angle to avoid damage to the coil)