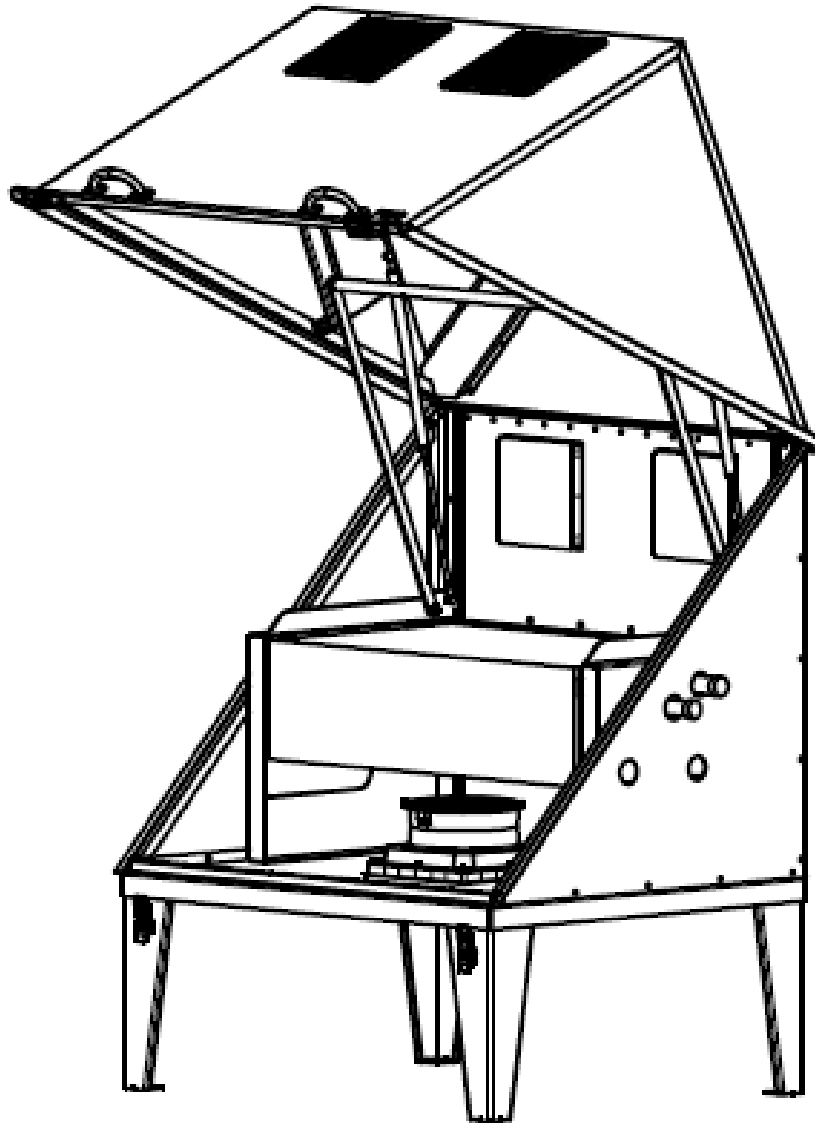


VRF Branch Controller Outdoor Enclosure



Scan the QR Code for an Instructional Video

Contents

Personal Protective Equipment for Installation	3
Safety Warnings.....	4
Stand Assembly	5
Controller Stand Assembly.....	6
Installing the Branch Controller.....	7
Cabinet Panel Assembly	8
Hood Assembly	12
Opening Components.....	16
Final Components & Checks.....	20

Personal Protective Equipment for Installation

Safety Glasses:

- Should be worn to protect against dust, debris, and accidental contact with tools or fasteners.

Work Gloves:

- Cut-resistant gloves are recommended when handling sheet-metal panels or components with sharp edges.

Protective Footwear:

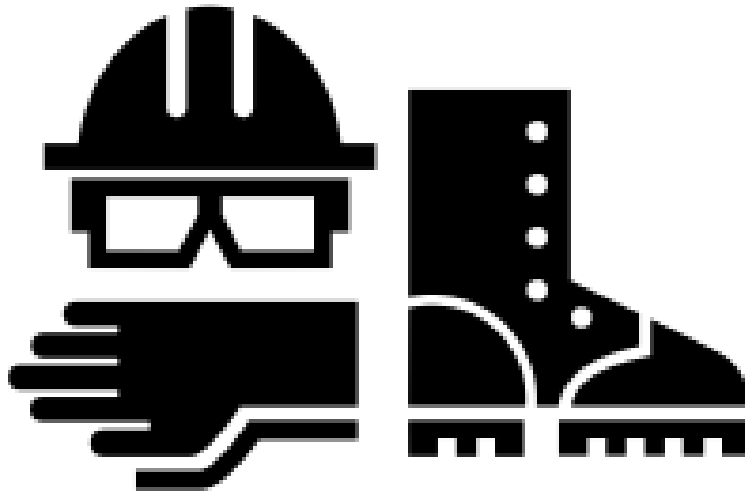
- Safety-toe or sturdy work shoes are recommended when lifting or positioning heavier assemblies.

Hearing Protection (as needed):

- To be used when installation involves drilling, cutting, or other high-noise tools.

Appropriate Work Clothing:

- Installers should avoid loose clothing or accessories that may catch on hardware or moving components.



Safety Warnings

Crush & Pinch Hazards

- Hood and access panels may move suddenly if not properly supported.
- Keep hands clear of hinges, linkages, and gas-spring mounting points during installation.

Sharp Edges

- Sheet-metal components may have exposed edges. Use gloves and handle all panels with care.

Heavy Lifting / Handling

- Some assemblies exceed safe one-person lifting limits.
- Use team lifting, mechanical lifting devices, or material-handling equipment when required.

Pressurized Components

- Gas springs are pre-charged and must not be opened, punctured, heated, or disassembled.
- Install only using the hardware and mounting points shown in the provided drawings.

Improper Hardware Use

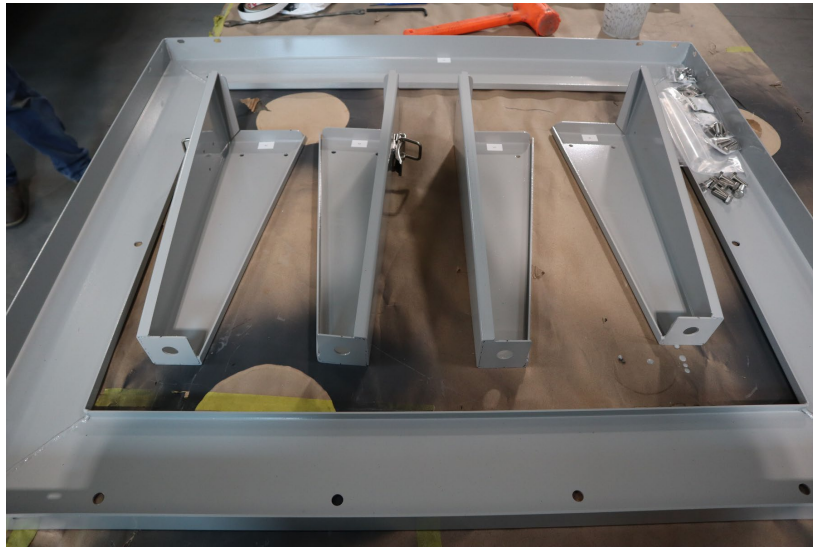
- Using incorrect hardware or omitting sealing washers may compromise structural integrity and environmental sealing.
- Always verify part numbers against the bill of materials.



Stand Assembly

Components Used:

- Rear stand legs – Item 1 (qty 2)
- Front right stand leg – Item 2 (qty 1)
- Front left stand leg – Item 3 (qty 1)
- Stand top – Item 4 (qty 1)
- Hardware: 1/4-20 x 1" bolts, 1/4" washers, 1/4-20 nylock nuts (Items 17, 18, 19)



1. Unpackage contents and Assemble Front Stand Legs (1) and Rear Stand Legs (2 & 3) to the Stand Top (4)



2. Once legs are assembled to the Stand Top (4), Secure the Bottom Panel (8).
 - a. Do not tighten all the way yet

Controller Stand Assembly

Components used

- Controller stand left panel – Item 5
- Controller stand right panel – Item 6
- Controller stand rear panel – Item 7
- Controller – Item 16
- Hardware:
 - 1/4-20 x 1" bolts, 1/4" washers, 1/4-20 nylock nuts (Items 17, 18, 19)
 - 1/4-20 x 1/2" bolts, 1/4" washers & 1/4-20 nylock nuts (20, 21, 22)
 - 1/2" ID x 1/2" spacers (23)

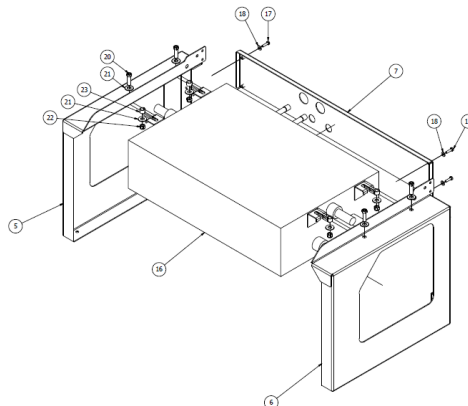




3. Assemble the Controller Stand Left Panel (5), Right Panel (6), and Controller Stand Rear Panel (7) on top of the Cabinet Bottom Panel.
 - a. Do not tighten all the way

Installing the Branch Controller

4. These visual instructions do not contain a controller. However, to mount the Controller you would follow the below steps:
 - a. Mount the Controller (16) to either one of the side Panels (5 or 6)
 - b. Mount the Rear Panel (7)
 - c. Mount the last side panel remaining (either 5 or 6 depending on which was used in step 1)



Cabinet Panel Assembly

Components used

- Cabinet bottom panel – Item 8 (already installed)
- Cabinet rear panel – Item 9
- Cabinet left panel – Item 10
- Cabinet right panel – Item 11
- Hardware:
 - 1/4-20 x 1" bolts & 1/4" washers (17, 18)
 - 3/8-16 x 1" bolts, 3/8" washers, 3/8-16 nylock nuts (24, 25, 26)
 - 1/4-20 x 5/8" button head screws & 1/4" sealing washers (27, 28)





5. Connect the Rear Panel (9) to the Controller Stand



6. Screw in the bolts that hold the Rear Panel (9) and Bottom Panel (8) together



7. Go back and tighten all of the original bolts from the previous steps



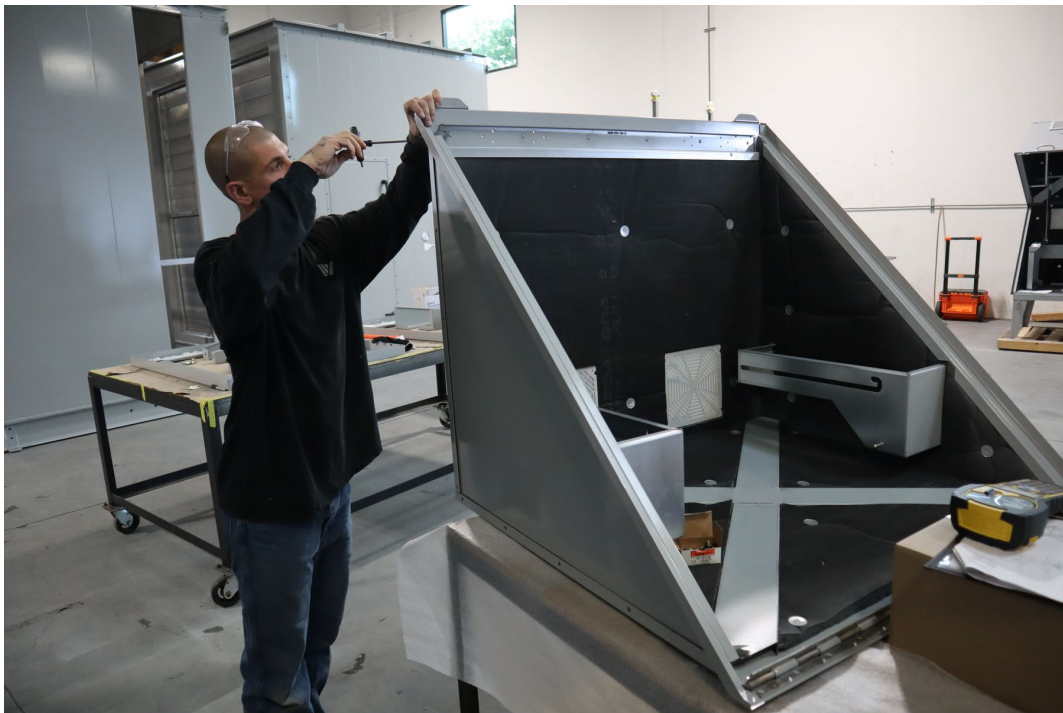
8. Position and install cabinet left panel (10) against the left side of the assembly
9. Repeat for the cabinet right panel (11) on the opposite side.

Hood Assembly

Components used

- Hood top panel – Item 12
- Hood front panel – Item 13
- Hood left panel – Item 14
- Hood right panel – Item 15
- Hood Handle - Item 32
- Hardware:
 - 1/4-20 × 5/8" button head screws – Item 27
 - 1/4" sealing washers – Item 28





10. Position the hood left panel (14) and hood right panel (15) along the sides of the hood top panel (12), aligning corner holes.
11. Attach the side panels
12. Confirm all seams are tight and the hood assembly is square.



13. Install the external hood handles to the front edge of the hood



14. With assistance, lift the hood assembly onto the top of the cabinet, aligning the hinge and panel mounting locations.



15. Install the hood-to-cabinet fasteners

Opening Components

Components used

- Steel bar(s) – Item 29
- Hood handle – Item 32
- Shoulder bolts – Items 30 and 31
- Nylon washers – Item 36
- Gas springs – Item 34
- M8 nylock nuts – Item 35
- 3/8" washers – Item 25 and 3/8-16 nylock nuts – Item 26



16. Prop the hood using a temporary brace as shown in the photos.



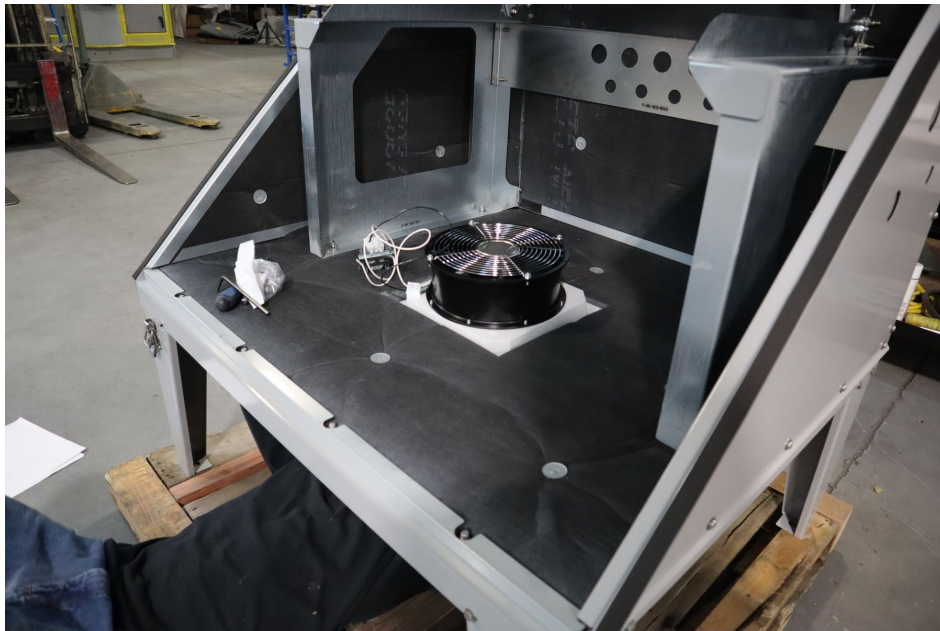
17. Attach the gas springs (34) to the upper hood brackets
18. Attach the lower gas spring ends to the lower brackets on the cabinet/strut assembly





19. From inside the cabinet, install the steel support bars (29)
20. Install the hood handle (32)
21. Confirm handle is centered and secure.

Final Components & Checks



22. Mount the fan assembly to the bottom panel as shown in the final photos.
 - a. **Use the tabs on the fan assembly to install it properly. DO NOT slam the fan in. It will likely fall back out if not installed properly.**
23. Route wiring and secure per electrical drawings (not included here).
24. Go over the entire assembly and tighten all hardware



25. Verify all seams are fully sealed and weather-tight.

26. Confirm:

- Stand is level and stable
- Hood opens, stays open, and latches closed correctly
- Controller stand and cabinet panels are rigid with no gaps
- All cosmetic panels are aligned and free of damage